



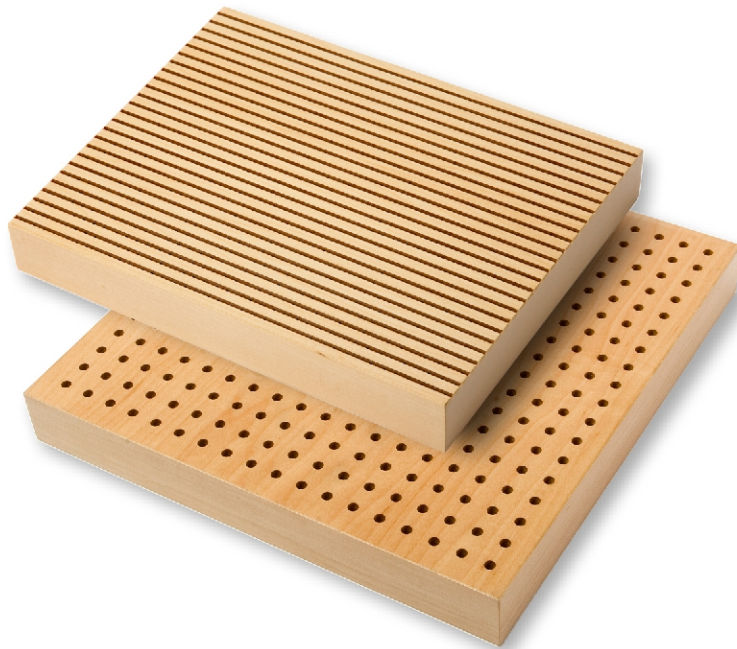
APPLICATIONS

- Ceiling and Walls
- Auditoriums & Conference Rooms
- Airports
- Home Theaters
- Lobbies/Reception Area
- Multipurpose Areas
- Banks & Executive Boardrooms
- Schools, Colleges, Universities
- Large Open Office Space
- Performance Space
- Worship Facilities

AVAILABLE LEED CREDITS*

- MR 4: Recycled content
- MR 5: Locally manufactured & harvested materials
- MR 6: Rapidly Renewable Materials
- MR 7: FSC Chain of Custody Certification
- EQ 4.2: Low VOC Finishes
- EQ 4.4: Composite panels: No Added Urea Formaldehyde

** Must be specified prior to tender and ordering.*



STANDARD WOOD SELECTION**



Douglas Fir



Western Cedar



Western Hemlock



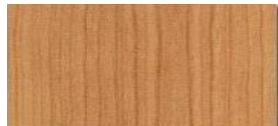
Western Birch



Alder



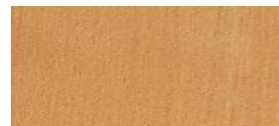
Walnut



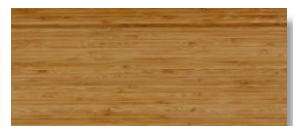
Cherry



Mahogany



Euro Steamed Beech



Bamboo



Ash



White Maple



Red Oak



White Oak

*** Contact the manufacturer for other wood species availability. Due to nature of real wood (variation in grain, texture and color) the finished product may range from light to dark.*

GEOPANEL "SONATA" - WOOD ACOUSTICAL CEILING AND WALL PANELS



SPECIFICATION

Specie: see chart
Core: composite
Thickness: 1-1/2", 2-1/2"
Panel size: custom
Panel shape: Flat
Curved

Acoustic Membrane: Perforated
Slotted
Round Square
Grooved

Finish: 20 sheen clear
Custom Stain: available upon request

Insulation: Acoustic (included)
Pnl edges: Edge Banded

Class A: available upon request

Panel weight: approx. 3-1/2 lbs/SF

BENEFITS

- Wide variety of perforation patterns
- Easy installation using standard hardware or custom engineered installation hardware
- Drastically reduced installation cost.
- High NRC Rating
- Contribute towards LEED certification
- Choice of veneers
- Seismic solution is available

CONTACT INFO

Geometrik Manufacturing Inc.
1285 Stevens Road
West Kelowna, BC V1Z 2S9
T.F. 1-888-306-0024
ph. 250-769-1500
fax. 250-769-1520
e-mail: info@geometrik.com
www.geometrik.com



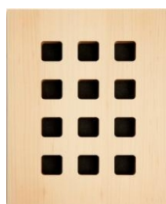
PRODUCT STYLES



SO-2832SP-CS
Perforated



SO-2200SL-CS
Slotted

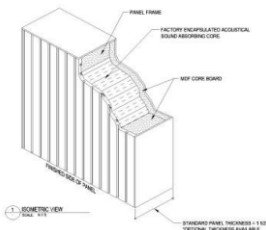


SO-2300RS-CS
Round Square



SO-1000-CS
Grooved

PANEL CONSTRUCTION



Geopanel Sonata has a composite construction consisting of an acoustical membrane attached to the panel frame. There is a factory encapsulated acoustical core inside the panel. Acoustic membrane comes in variety of styles.

PRODUCT DESCRIPTION

Where events such as conferences, concerts and presentations will occur, speeches and announcements need to be concise and clear, music must be heard clearly and there must be a good listening environment for all acoustically sensitive activities. Basic factors that affect a room's reverberation time include the size and shape of the enclosure as well as the absorption coefficient of materials used in the construction of the room.

Composite construction of Geopanel Sonata not only achieves higher levels of noise reduction coefficient (NRC) but eliminates the need of using additional acoustic material such as 1" acoustical insulation that is usually placed on top of the ceiling panels to enhance their acoustical performance. Required NRC is achieved by choosing the appropriate acoustical membrane. The installation of the panels is as easy as hanging picture frames.

Please call our technical support team 1-888-306-0024 for more information.

ENVIRONMENTAL STATEMENT



As part of our ongoing commitment, we put every effort in preserving our forest for future generations. That is why we actively promote panels made of engineered wood that is environmentally friendly, easy to recycle, made of recycled fiber and has a low impact on the environment. Geometrik is offering wood ceiling and wall panels that are manufactured using environmentally preferable products (EPP) such as low emitting sustainable fiberboard (SDF) that contains pre-consumer and/or post-consumer recycled fiber and has no added urea formaldehyde. We use low VOC finishes to further contribute to sustainable design.